

# Cambium Networks ePMP Force 425



**Kode** : ePMP-Force-425

**Brand** : Cambium

**Jenis** : Wireless Outdoor

**Harga** : Rp 7.850.000,00

Rp 9.100.000,00

Cambium Networks memperkenalkan solusi point to point ePMP Force 425 yang memberikan throughput hingga 1 Gbps. Menggunakan standar wireless **802.11ax** terbaru. Memiliki **1 x RJ-45**, **1 x SFP**, dan **antena dish sudah termasuk**.

**\*Spesifikasi perangkat dijual bisa berbeda dengan yang ditampilkan karena menyesuaikan dengan regulasi di Indonesia.**

Penawaran Harga Spesial

 **08112039555**

## ePMP Force 400 Series Quick Look (Key Product)

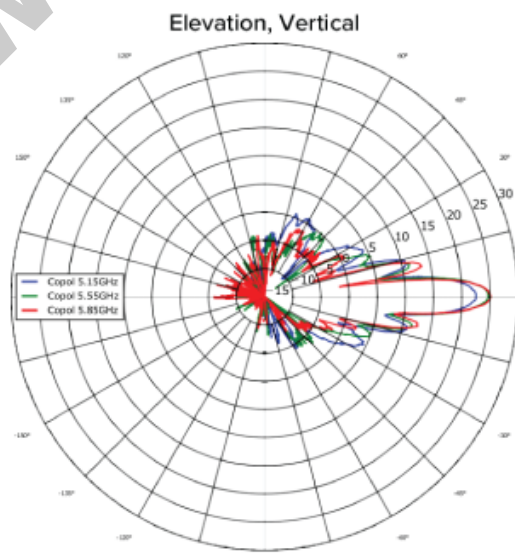
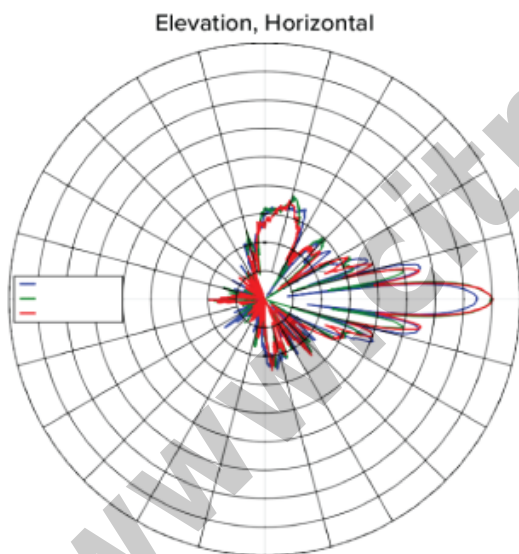
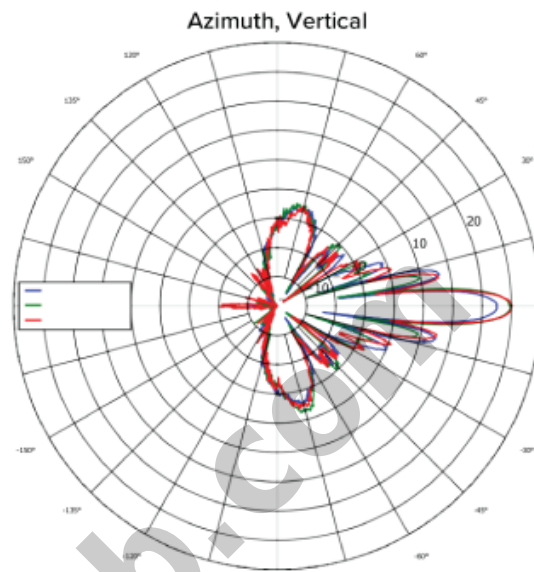
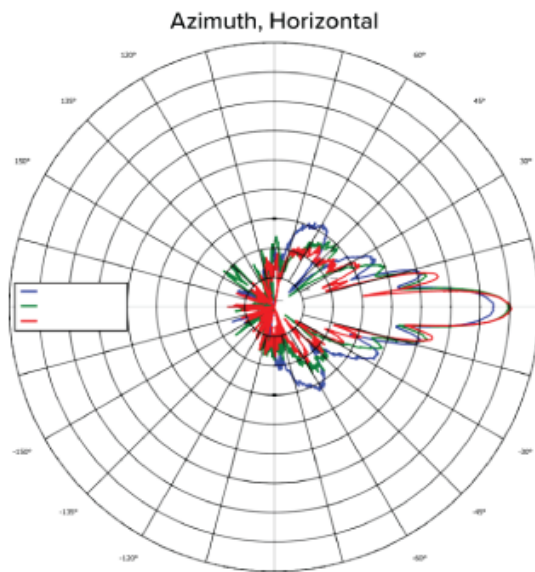
- Solusi point-to-point pertama di industri berdasarkan 802.11ax, memberikan kapasitas hingga Gbps.
- Kualitas enterprise berkapasitas tinggi.
- Solusi Backhaul WISP berbiaya ekonomis.
- Wi-Fi Hotspot Backhaul.
- GPON last mile.

Spectrum	
Channel Width MHz	20   40   80
Proprietary Physical Layer	802.11ax, 2x2 MIMO/OFDM
Channel Spacing	Configurable in 5 MHz increments
Frequency Range	Country-dependent based on local regulations.
MAC Layer (Media Access Control)	Cambium Proprietary
Ethernet Interface	100/1000 BaseT, Compatible with Cambium PoE & Standard PoE pinouts; 10 Gigabit SFP cage for optional SFP modules Protocols
Used	IPv4/IPv6 (Dual Management Stack), UDP, TCP, ICMP, SNMPv2c, NTP, STP, IGMP, SSH
Network Management	IPv4/IPv6, HTTPs, SNMPv2c, SSH, Cambium Networks CnMaestro™
VLAN	802.1Q with 802.1p priority

<b>Performance</b>	
ARQ	Yes
Maximum Capacity	1 Gbps
Latency	< 5 ms
Nominal Receive Sensitivity (w/FEC) @20 MHz Channel	MCS 0 = -93 dBm to MCS 11 (1024 QAM-5/6) = -63 dBm (per chain)
Nominal Receive Sensitivity (w/FEC) @40 MHz Channel	MCS 0 = -90 dBm to MCS 11 (1024 QAM-5/6) = -60 dBm (per chain)
Nominal Receive Sensitivity (w/FEC) @80 MHz Channel	MCS 0 = -87 dBm to MCS 11 (1024 QAM-5/6) = -57 dBm (per chain)
Modulation Levels (Adaptive)	MCS 0 (BPSK) to MCS 11 (1024 QAM-5/6)
Transmit Power Range	+3 to +28 dBm (combined, to regional EIRP limit) (1 dB interval)
Maximum Distance	In PTP application deployments, the maximum distance supported is 32 km (19.9 mi)
<b>Physical</b>	
Connectors	1 x RJ-45, 1 x SFP
Surge Supression*	1 Joule Integrated
Environmental	IP67 including metal housing
Temperature	-30°C to 55°C (-22°F to 131°F)
Weight	4.8 kg (10.6 lbs.)
Wind Survival	180 km/h (112 mph)
Dimensions(H x W x D)	470 mm diameter x 285 mm depth (18.5 in diameter x 11.2 in depth)
Pole Diameter Range	Center: 3.1 to 7.6 cm (1.25 to 3.0 inches)
Power Consumption	28 W
Input Voltage	802.3at or Passive PoE 44-59 V
Included Power Supply	100-230VAC ,56V, 30W, PoE adaptor *Optional 56V surge suppressor available: Part # C000000L033A **Longer bolts are needed for pole diameter greater than 55 mm
<b>Security</b>	
Encryption	128-bit Over-the-Air Encryption (256-bit AES where export rules allow - ROADMAP Feature)

<b>Certifications</b>	
FCC Regulatory Part Number	C058940P102A
FCC ID*	Z8H89FT0062
ETSI/ROW Regulatory Part Number	C050940P001A
Industry Canada Cert*	109W-0062
CE	EN 301 893 V2.1.1 (5.4 GHz), EN 302 502 V2.1.1 (5.8 GHz)*
<b>Antenna Specifications</b>	
Frequency Range	4910-6135 MHz
Antenna Type	Dish
Peak Gain	25 dBi
3 dB Beamwidth Azimuth	7°
3 dB Beamwidth Elevation	7°
Front-To-Back Isolation	>32 dB
Cross Polarization	>11 dB

**Force 425 Antenna Patterns**



Download Data Sheet : [Data Sheet ePMP Force 400 Series](#)

Rencanakan dan  
kelola penerapan  
ePMP Force 425 Anda  
dengan **LINKPlanner**  
dan **cnMaestro™**



\* Harga, spesifikasi, dan ketersediaan bisa berubah dan tidak mengikat

**URL :** <https://www.citraweb.com/produk/1144/>

**Informasi lebih lanjut, pemesanan dan pembelian, hubungi: 0274-554444 atau email [sales@citraweb.com](mailto:sales@citraweb.com)**

[www.citraweb.com](http://www.citraweb.com)